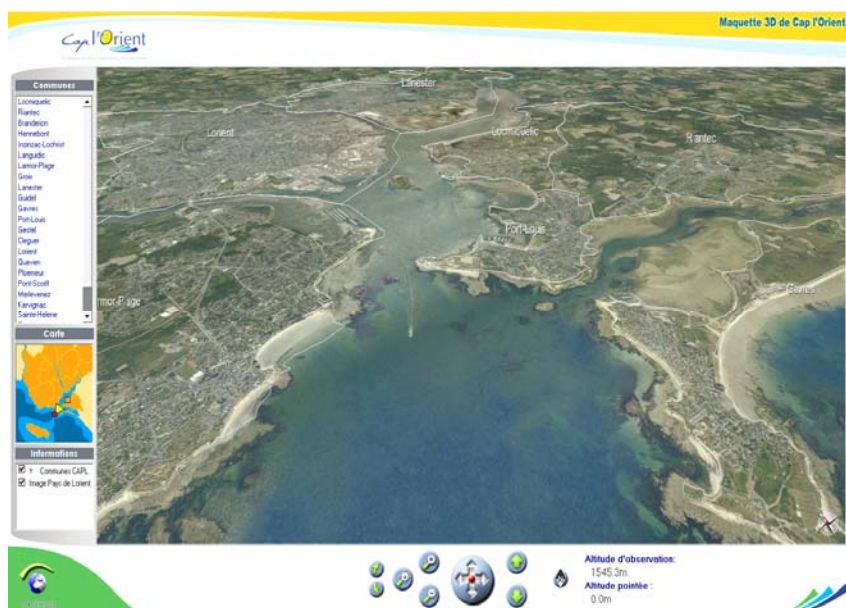




SpacEyes 3D SERVER

The module of web publishing of SpacEyes 3D models





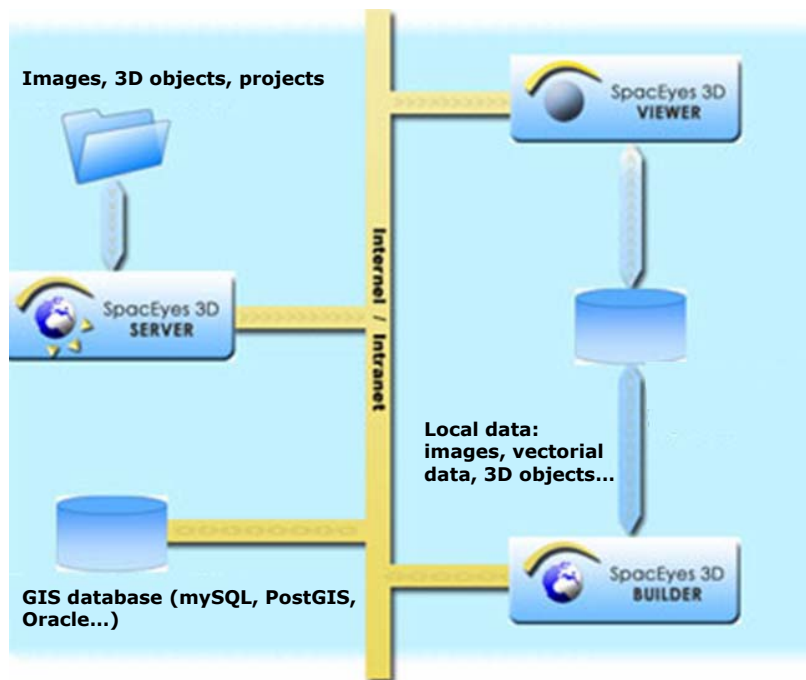
SpacEyes 3D **SERVER**: Circulate your 3D models on Internet

↳ Principle of the application

SpacEyes3D Server is based on an innovative streaming technology and allows to circulate via intranet or Internet your imaging and 3D objects.

Coupled to a spatial database server, it is the complete and economic solution for the on-lining of your projects and 3D models realised with **SpacEyes 3D Builder** and visualised with **SpacEyes 3D Viewer**.

The internet user downloads **SpacEyes 3D Viewer** and from the execution, the Viewer is connected via Internet / Intranet with the two servers (**SpacEyes 3D Server** and the spatial database). It downloads dynamically the data to display as one goes along the user moves along the 3D model.



↳ Minimum recommended configuration of the Server (Level I)

SpacEyes 3D Server runs on computers of the type PC Server operating under Windows XP Pro or Windows 2003 Server (a Linux version is expected for 2008).

The minimum recommended configuration is:

- Windows 2003 Server,
- AMD Athlon 64 3500+ or similar,
- RAM: 2 Gb,
- Hard disk: 120 Gb,
- Network: 100 Mbs.

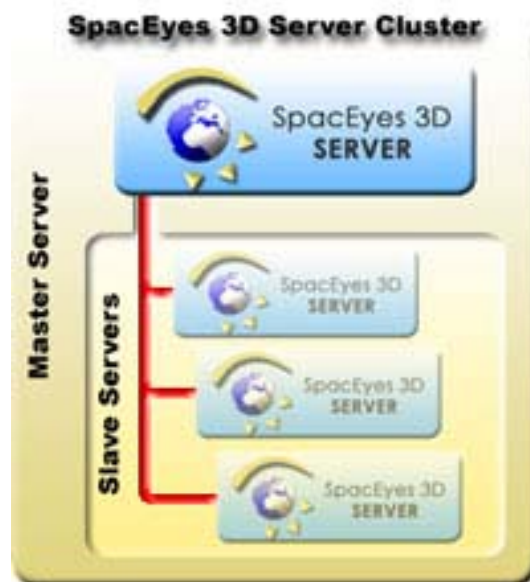
Web hosting service

The option to be privileged is a dedicated Server at a Web Host (Windows 2003 Server). SPACEYES can also advise a Web Host or take in charge the hosting.

Increase of the Web user number

Owing to its innovative technical features, the SpacEyes3D Server deployment is predicted to **evolve** easily **in power** functions of an increasing number of users/or data quantity on-lining. In fact the offered solution:

- Take advantage of multicore and multiprocessors servers,
- Run in **cluster mode** to increase the availability,
- Manage access right on each shared folder,
- Manage access right per user and user group.



Thus, from the minimum recommended configuration, it is also possible to choose or to evolve towards a more capable configuration:

Level II:

- AMD Opteron 148
- 2.048 Mb DDR-RAM
- 2 x 200 Gb hard disk (Hardware RAID 1)
- 200 Gb of backup via FTP

Or

Level III:

- AMD Opteron 175 (Dual-Core)
- 4.096 Mb DDR-RAM
- 2 x 250 Gb hard disk (Hardware RAID 1)
- 250 Gb of backup via FTP